

EYE CARE DIRECTORY

Resources & Personnel

Western Area Health Service

Walgett Aboriginal Medical

Service Limited

Last updated: 24/8/2015

PREAMBLE

This directory is to enable health care workers in the multidisciplinary team to identify whom they can refer eye care clients to within the Walgett Aboriginal Medical Service Cooperative Limited Region of NSW.

It provides a list of associated personnel and other useful contacts, resources and links. The communities serviced by eye care practitioners within the Walgett Shire Region are listed. It is the responsibility of each region to keep this up to date and review regularly to ensure all contacts are up-to-date.

Coordination of eye care resources and personnel in [region]

List of eye health coordination personnel –

| Role | Definition/Responsibilities | Contact Name & Contact Details | Communities covered by service |
|---|--|--|--------------------------------|
| Primary Care Linkages | | | |
| Chronic Disease Case Managers/ Diabetic Care Coordinators | Ensure that ALL patients with diabetes have an annual retinal eye exam. Collaborate with primary care teams to ensure patient lists for visiting eye care practitioners are prepared. Monitor proportion of diabetic patients getting annual eye exam. | Jill Murray Chronic Disease Manager Walgett Aboriginal Medical Service 68203726 | Walgett, Goodooga and Pilliga |
| Primary Health Care Team (GP, Nurse, AHP) | Conduct routine eye and vision checks (e.g. as part of Adult Health Check) and refer for eye examinations as required (as per recommended guidelines). Manage acute/emergency eye care cases as per standard treatment protocol. Ensure follow up along the patient pathway. | Jill Murray Chronic Disease Manager Walgett Aboriginal Medical Service 68203726 | Walgett, Goodooga and Pilliga |
| Aboriginal Community Based Workers (where relevant) | Recognise community members not attending clinics and promote visiting eye care services. | | |

| | | | |
|--|---|--|---------------------------------------|
| Kids/School health screening programs | Conduct eye and vision screenings for children refer to eye care practitioners as required and ensure follow up (patient receives appropriate services). | Kylie Gilmore Practice Manager Programs Walgett Aboriginal Medical Service 68203740 | Walgett Shire |
| Eye Care Services | | | |
| Optometrist | Provide comprehensive eye health examinations including refraction, detection of eye and vision disorders and management or referral to ophthalmology as appropriate. Provide majority of eye care services including annual diabetic retinal examinations. | Brien Holden Vision Institute Jenny Hunt at Walgett Aboriginal Medical Service on 68203791 | Walgett Shire and Gunnedah |
| Spectacles | Sources and options for spectacle supply (subsidised spectacle schemes, low cost spectacle schemes, private prescriptions, readymade spectacles) | Jenny Hunt at Walgett Aboriginal Medical Service 68203791 | Walgett Shire and Gunnedah |
| Organising Eye Clinics | | | |
| | | | |
| Aboriginal Eye Health Practitioners/Workers (where relevant) | Facilitate visiting eye care services within their primary health care clinic, where relevant work in partnership with RECH regarding trip scheduling etc. | Jenny Hunt Walgett Aboriginal Medical Service Ph. 6820 3791 | |
| Transport Services | Ensuring patients arrive in timely manner for appointments. | Jenny Hunt Walgett Aboriginal Medical Service Ph. 6820 3791 | Assistance only to local services. |
| | | | |
| | | | |

| | | | |
|-------------------------------|--|--|--|
| | | | |
| Regional Networks | | | |
| Regional eye care group | | | |
| Regional ACCHSs network | | | |
| Medicare Local | | | |
| Local Hospital Network | | | |
| NGOs | | | |
| Brien Holden Vision Institute | | | |
| Fred Hollows Foundation | | | |
| Indigenous Eye Health Unit | | | |
| | | | |

Facilitating Eye care services within your clinic

- Maintaining patient records and generating recall lists
- Eye care practitioners using electronic records
- Patient transport to appointments
- Facilitate access to services for people with low vision
- Provide support and follow-up for patients
- Coordinate hospital visits for patients

Regional Eye Care referral pathways

Eye care is primarily provided by eye care practitioners: optometrists and ophthalmologists. The majority of eye care in Australia is provided by optometrists, who then refer appropriately to ophthalmologists for treatment or management of eye pathology using medicines, laser or surgery.

In the context of eye care provided in/through primary health care settings (such as ACCHOs), the three tiers (primary, secondary, tertiary) of eye care is defined as:

1.

Primary

At the primary health care level (e.g. vision screening for the AHC)

2.

Secondary

By an eye practitioner (e.g. visiting optometrist or ophthalmologist)

3.

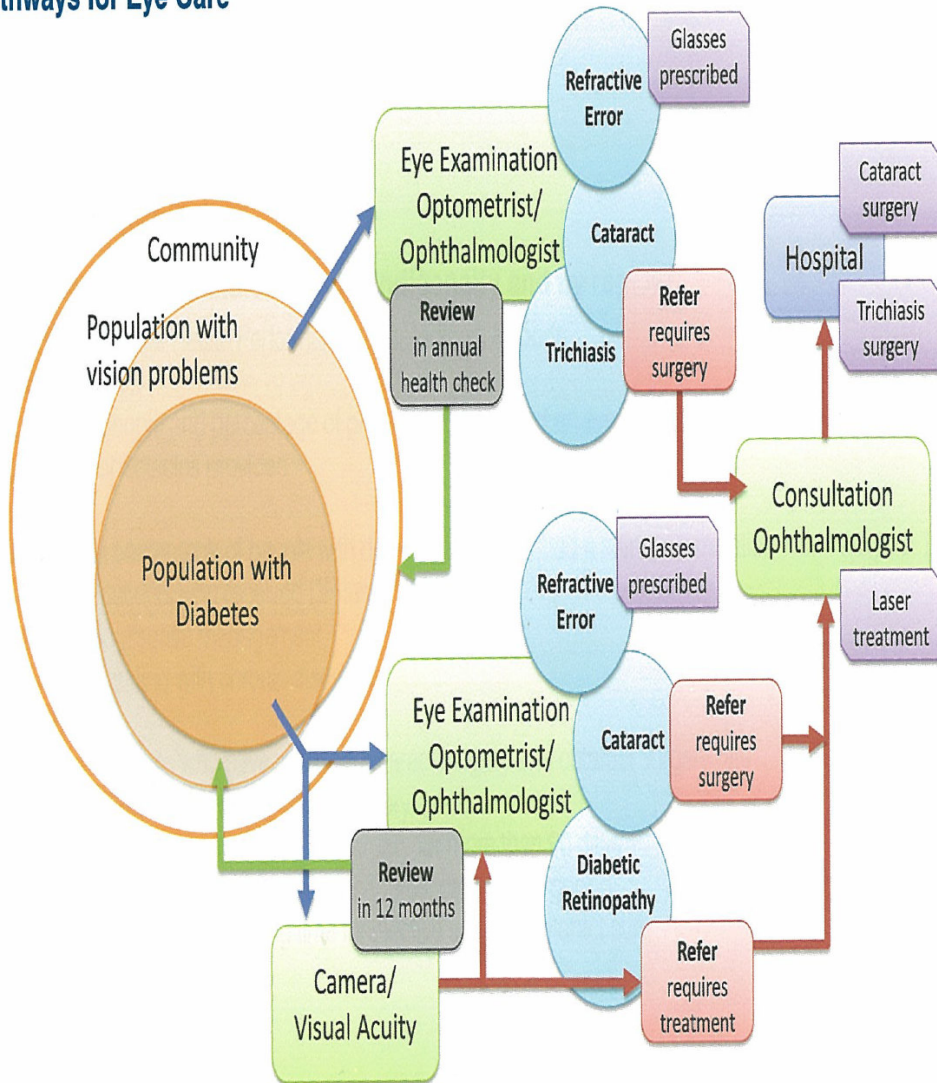
Tertiary

Hospital-based care/treatment (e.g. cataract surgery)

Define the referral pathway and referral processes (where do you send referrals to)

This picture 'The Pathways for Eye care' represents the eye care referral pathway as shown by IEHU Roadmap to Close the Gap for Vision, January 2013 page 24: Taylor, H.R., et al., The Roadmap to Close the Gap for Vision (Full Report). 2012, Melbourne School of Population Health, University of Melbourne: Melbourne.

The Pathways for Eye Care



REGIONAL VISITING EYE CARE SCHEDULE

(Regional schedule and local schedule where available)

USEFUL RESOURCES

Indigenous EyeInfoNet

The HealthInfoNet is a 'one-stop' internet resource that aims to inform practice and policy in Indigenous health by making research and other knowledge readily accessible. In this way, the HealthInfoNet aims to contribute to 'closing the gap' in health between Indigenous and other Australians.

Australian Indigenous HealthInfoNet

Kurungkurl Katitjin – Edith Cowan University
2 Bradford Street, Mt Lawley WA 6050

Telephone: 08 9370 6336

Facsimile: 08 93706022

Email: healthinfonet@ecu.edu.au

Web: www.healthinfonet.ecu.edu.au