



A Dental River Change

Sandra Meihubers

Walgett Aboriginal Medical Service (WAMS)

A chance to experience rural life and work with Aboriginal people

- **WAMS dental program, only dental clinic in town**
- **Full time dentist once, now rely on visiting locums**
- **Paid locum opportunities, not volunteer**
- **Minimum 2 weeks**
- **A program that services ALL members of the community**

www.walgettams.com.au

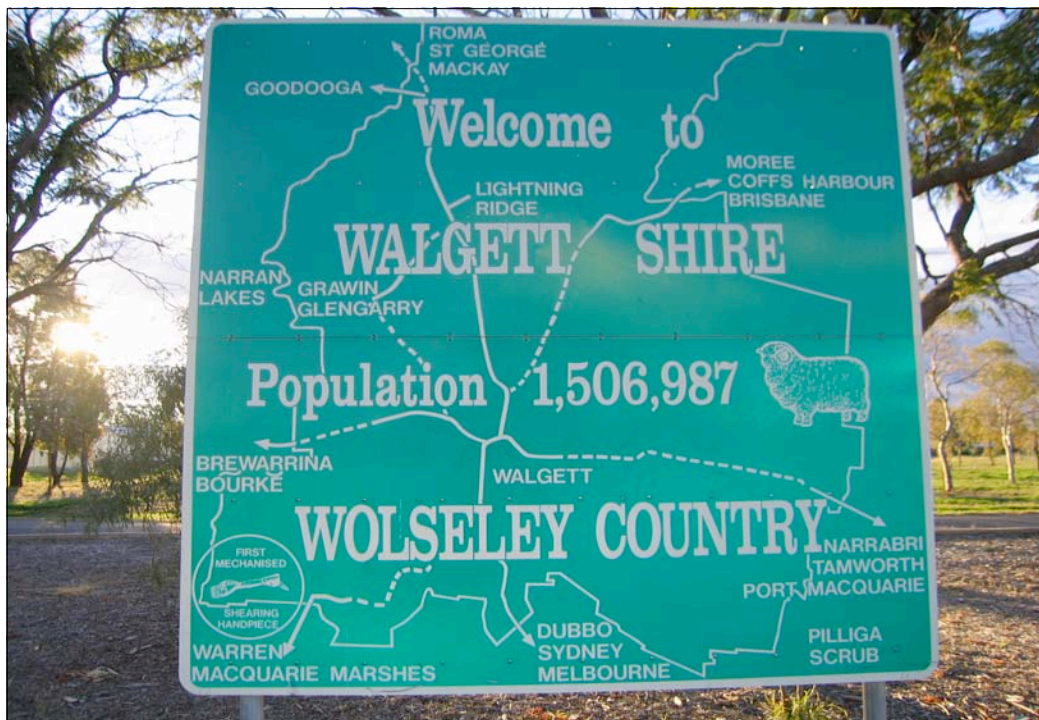


Where's Walgett?



- 3 hours drive north of Dubbo, 70km south of Lightning Ridge
- Population ~2700-3000
- Sheep, wheat, cotton, beef cattle, opals

www.walgettams.com.au



Walgett Aboriginal Medical Service

- Aboriginal Community Controlled Health Service
- Many health programs including GP, chronic disease, ear health, eye health, mental health, dental health

www.walgettams.com.au



We get you to Walgett





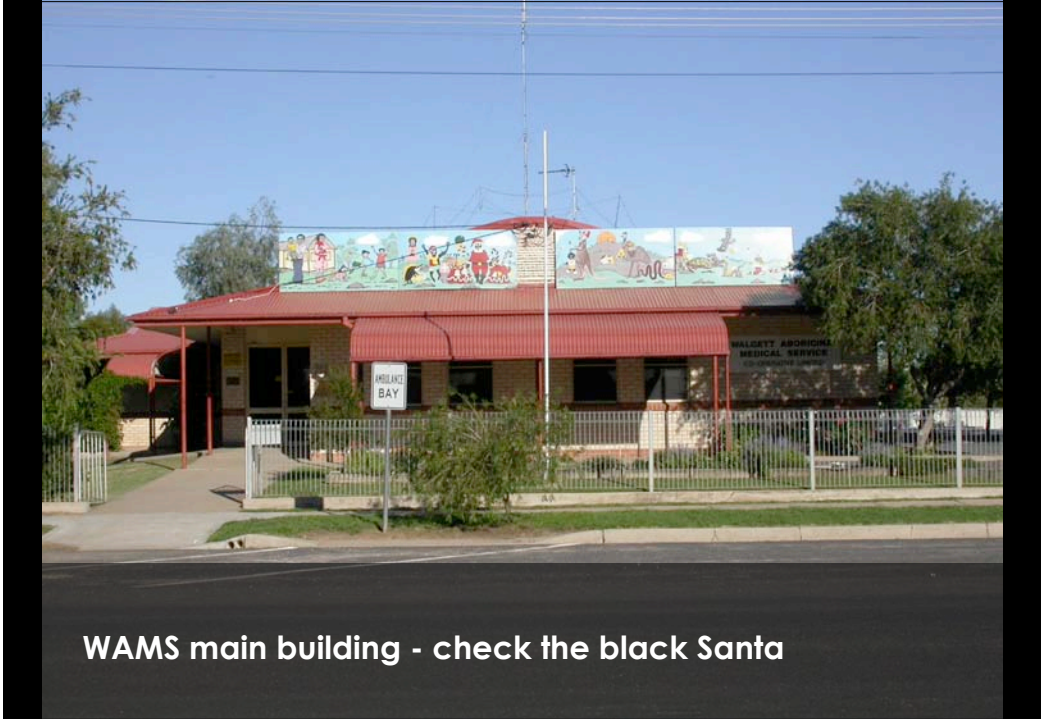
- IGA supermarket, butchers, PO, newsagent, ATMs
- Clubs, Chinese restaurant
- Lawn bowls, tennis, golf, darts



Main street looking to the IGA and newsagent



At the Post Office, looking to the lunch cafe



WAMS main building - check the black Santa