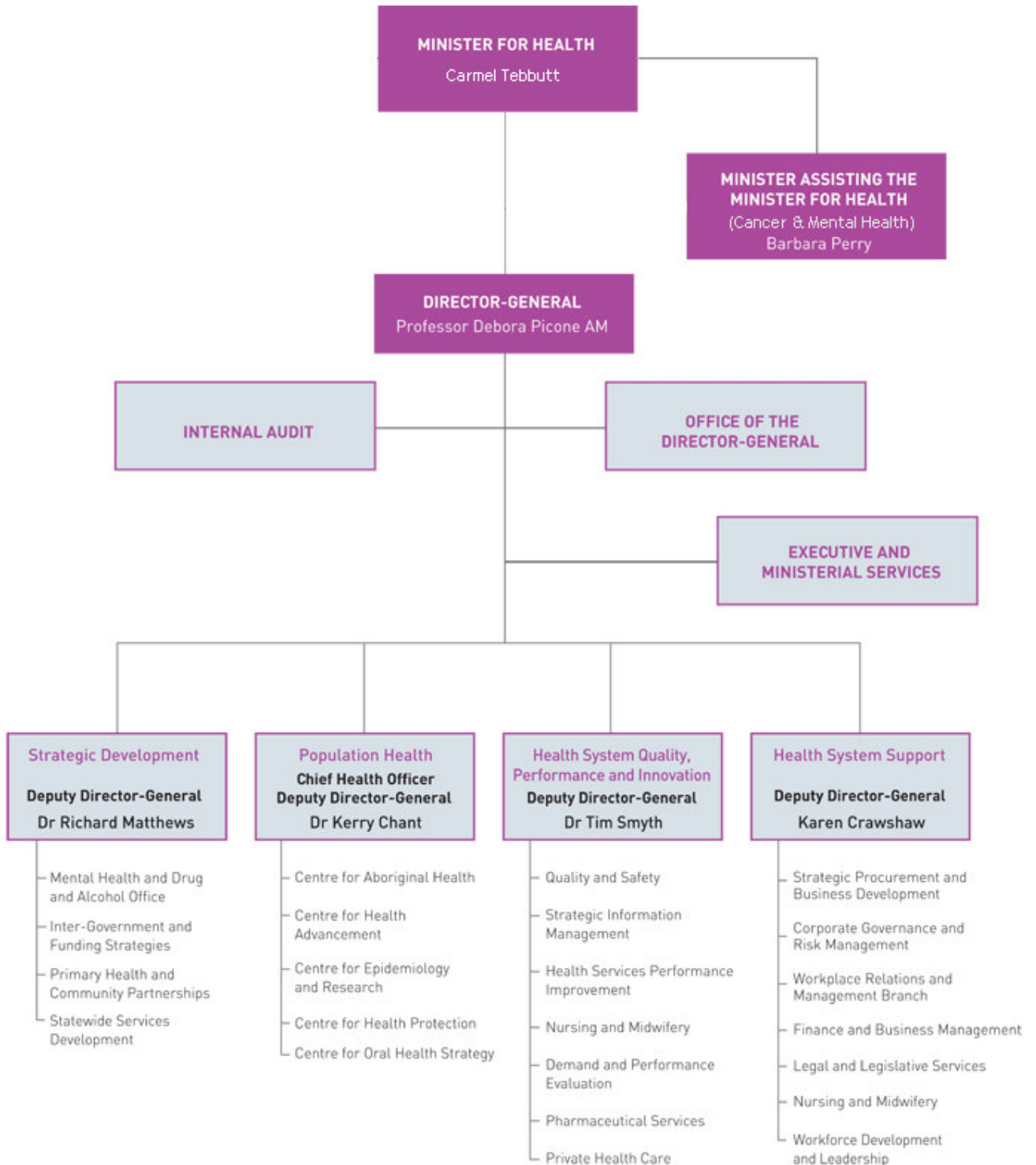


Organisation Structure

Our Structure - NSW DoH

We support the executive and statutory roles of the NSW Minister for Health and the Minister Assisting the Minister for Health (Mental Health and Cancer). The Department of Health is administered through six main functional areas.



Director General

The Director General chairs the NSW Department of Health Management Board which is the key management meeting and forum for the NSW Department of Health. The Management Board considers and makes decisions on issues of department and health system-wide interest, including the NSW Health budget, development of health policy and monitoring of healthy system performance.

Office of the Director General

Provides high-level executive and administrative support to the Director General across a broad range of issues and functions. The Office works with the Deputy Directors General and members of the NSW Health Executive to ensure the Director General receives advice that is accurate, timely and reflects a cross agency view on critical policy and operational issues.

Executive and Ministerial Services

Units:

- Parliamentary and Cabinet Unit
- Media and Communications
- Executive Support Unit

Internal Audit

Provides financial and compliance audit and assurance services to Branches and key functions of the Department. Undertakes special investigations of matters within the Department as referred by the Minister, the Director General, NSW Auditor-General, Ombudsman and the Independent Commission Against Corruption. Provides specific audit, review and advisory services on information systems across NSW Health.

Strategic Development

The Strategic Development Division is responsible to the Director General for overall health policy development, funding strategies and the system-wide planning of NSW Health Services. The Division also supports the Health Care Advisory Council and a number of Health Priority Taskforces.

Branches/Centres:

- Mental Health and Drug and Alcohol Office
- Inter-Government and Funding Strategies
- Primary Health and Community Partnerships
- Statewide Services Development

Population Health

Population Health works with NSW communities and organisations to promote and protect health and prevent injury, ill health and disease. It monitors health and implements services to improve life expectancy and quality of life. It develops, maintains and reports on population health data sets, implements disease and injury measures, promotes and educates about healthier lifestyles, and protects health through disease prevention services and legislation. It ensures the quality use of medicines and the safe use of poisons.

Branches/Centres:

- Centre for Aboriginal Health
- Centre for Health Advancement
- Centre for Health Protection
- Centre for Oral Health Strategy
- Centre for Epidemiology and Research

Health System Quality, Performance and Innovation

The Health System Quality, Performance and Innovation Division aims to improve the patient journey by driving performance improvements in the health system. It works to achieve agreed performance measures for improved services for patients and works in partnership with Area Health Services and hospitals to develop and implement new models of care and ensure all clinical services are planned and managed systematically and cost effectively. Develops strong relationships and communications with frontline clinicians and managers to help them implement effective patient-centred improvements and provides expert advice on the performance of NSW Health to the Director General, the Minister and a range of external state and national agencies.

Branches/Centres:

- Quality and Safety
- Demand and Performance Evaluation
- Health Services Performance Improvement
- Strategic Information Management
- Nursing and Midwifery
- Pharmaceutical Services
- Private Health Care

Health System Support

Health System Support manages and provides strategic advice on financial, employee relations, asset and procurement, workforce, governance and risk, nursing and legal issues in the health system, provides corporate and executive support services for the Department and ensures the health system operates within available funds.

Branches/Centres:

- Strategic Procurement and Business Development
- Corporate Governance and Risk Management
- Workplace Relations and Management Branch
- Finance and Business Management
- Legal and Legislative Services
- Workforce Development and Innovation