

Woodham  
Petroleum  
Services

- Fuels
- Oils etc
- Distributors for  
Walgett District

Phone: 68 281356

## The Spectator

79 Wee Waa Street, Walgett NSW 2832

Phone (02) 68 281008. Email: [spectator07@bigpond.com](mailto:spectator07@bigpond.com)

Price \$1.20 Wednesday 18<sup>th</sup> July 2018

Registered by Australia Post Publication No. NAC 1545.

Walgett · Collarenebrri · Lightning Ridge · Rowena ·

Come-By-Chance · Cumborah · Carinda · The Opalfields

New Holland  
Machinery

Walgett Tyre

Service

102 Fox Street  
Phone: 6828 1500

Trading as Geronimo  
Farm Equip

# EMPLOYERS HONOURED FOR SUPPORTING FIRERIGHTING EFFORTS LOCALLY

The NSW Rural Fire Service (NSW RFS) has honoured businesses who have gone above and beyond to help their volunteer firefighter employees help the community. NSW RFS Deputy Commissioner Rob Rogers presented Supportive Employers Awards to 12 businesses in recognition of their vital contribution to firefighting and emergency response efforts.

"I know having staff called away at short notice, sometimes having to down tools in the middle of a job or leaving the office for extended periods, puts pressure on workplace productivity and I would like to thank all employers who provide leave to NSW RFS volunteers," Deputy Commissioner Rogers said.

"The NSW RFS Supportive Employers Program recognises businesses who generously grant volunteers leave to attend emergency incidents during work hours without financial disadvantage and also implement measures such as specialised leave or promoting volunteering achievements."

The recipients honoured this year include a range of small businesses, large corporations and government agencies located in various areas of the state.

"Just like the volunteers who jump on trucks, operate radios and feed hundreds of responding firefighters and emergency service workers, employers who support volunteers make a very direct contribution to firefighting efforts in NSW," Deputy Commissioner Rogers said.

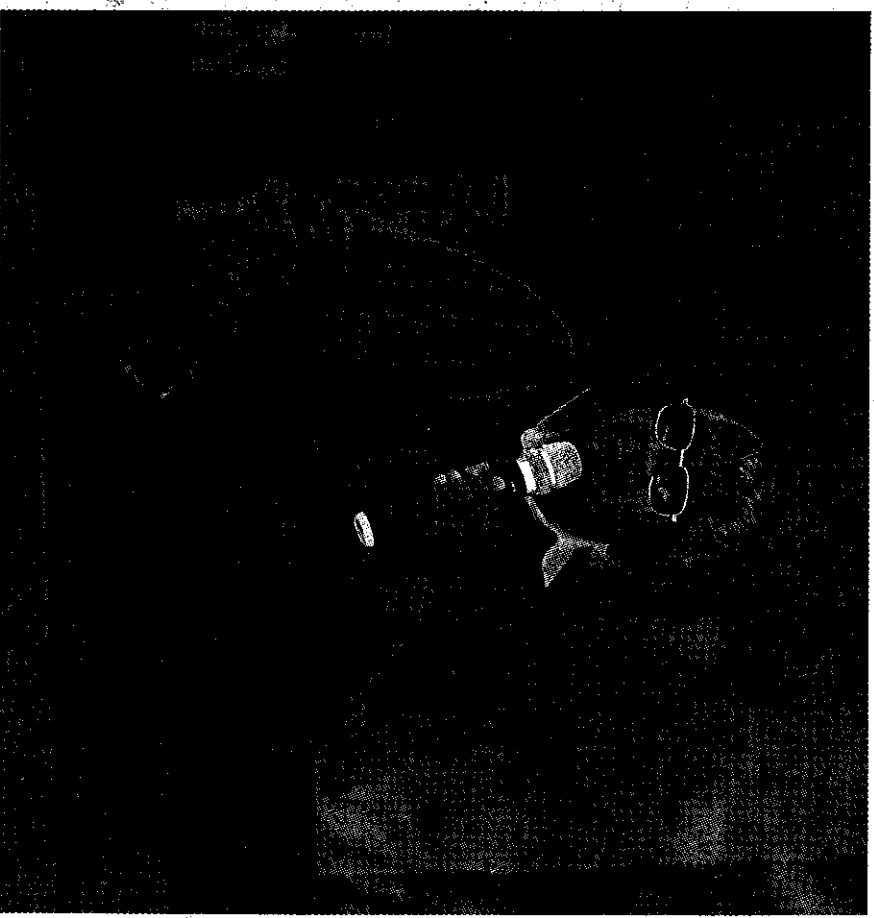
Deputy Commissioner Rogers thanked all employers who support NSW RFS volunteers, noting that having workers off tools or away from the office can be challenging.

"Volunteers continually dedicate their time to protecting communities across the state and this couldn't happen without supportive employers allowing them to do the things they do," Deputy Commissioner Rogers said.

"The upcoming bush fire season has the potential to be a very challenging one but it is reassuring to know we will once again be able to rely on the support of bosses and businesses right across NSW. Continued Page 3.



Barry Henry and Brett Smith (Elders Walgett) and Deputy Commissioner Rob Rogers after the presentation



George Ferrando addressing the crowd at the launch of NAIDOC Week which was held on the lawns of the Walgett Shire Council at the beginning of the celebrations

## NAIDOC WEEK 2018 CELEBRATED BY THE WALGETT COMMUNITY

NAIDOC Week 2018 celebrated the contributions that Aboriginal and Torres Strait Islander Women have made and continue to do so within local communities, their families and across Australia. The theme "Because of her we can" focused on these women and the role that they play within the community, local, state and national levels and focusing on women in the Walgett community. NAIDOC Week pictorial is continued on Page 4.

## The Spectator

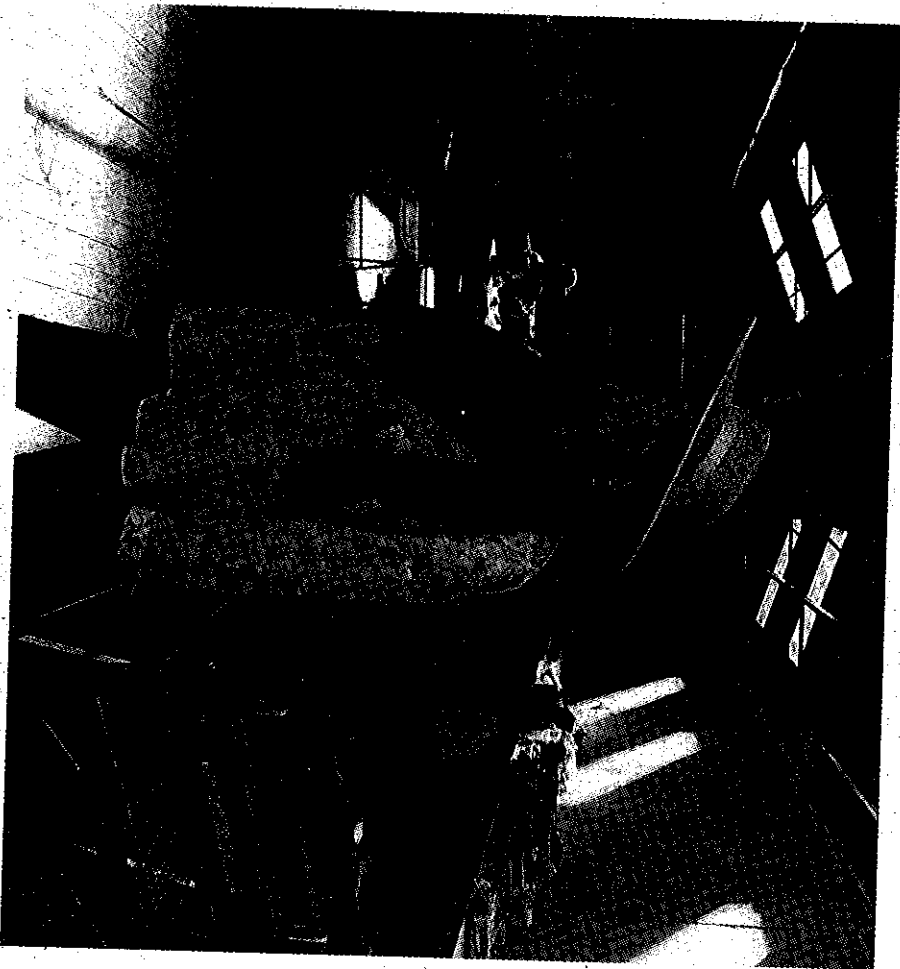
LOCAL AND INDEPENDENT

## HATS OFF ON THE MILLINERY TOUR 2018

Throughout the Walgett Shire residents have been able to take the opportunity to design new pieces of millinery and undertake repair and maintenance of preloved headwear.

Come-By-Chance, Collarenebri and 'Yerambah' (50km north of Lightning Ridge) were destination points providing the opportunity through the medium of hats, to reach out and connect people with others and with themselves. The workshops also offered hat doctor services including cleaning and stretching Akubras and work hats which many local men took advantage of... a little bit of maintenance can go far!

Through these workshops, the aim was to aid emotional well-being by providing space, skill and opportunity for people to express their feelings through colour, texture and shape. Art can be a powerful form of emotional therapy, and we believe that the hat is the art of the HEART.



## NSW GUN AMNESTY NOW UNDERWAY

Barwon communities should be aware that the NSW firearm amnesty has now commenced and it is urged that people register or hand over any illegal firearms in their possession to local police. The three month gun amnesty runs from 1 July to 30 September 2018.

In 2017, nearly 8000 firearms were handed in for destruction including 951 handguns and 5558 shotguns. A further 2100 firearms were handed in for sale, while nearly 15,000 were handed in for registration, providing police with critical information on each weapon including the serial number and the owner's details.

If you own a firearm, you have an obligation to ensure it is safely and securely stored at all times. Under no circumstances should loaded firearms be taken into public places – including police stations.

Anyone with concerns about handling firearms or safely transporting them, can contact the NSW Police Force Firearms Registry on 1300 362 562 for assistance. For more information visit [www.police.nsw.gov.au](http://www.police.nsw.gov.au)

## DROUGHT HUB: HELPING OUR COMMUNITIES

The NSW Drought Hub is a one-stop online destination for information on services and support available to primary producers, their families and communities to prepare for and manage drought.

As well as key infrastructure and financial support the Drought Hub also provides links to mental health and support services including: The Centre for Rural and Remote Mental Health: links rural people to the help they need • Rural Resilience Program: works in partnership with farming communities and service providers across NSW to strengthen networks, exchange information and deliver initiatives that build personal and business resilience skills and knowledge • Rural Advisory Mental Health Program: provides specialist knowledge and support for people experiencing mental health concerns.

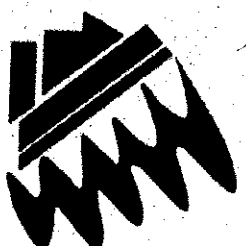
## NSW RFS THANKS LOCALS

Continued from Page 1.

"Volunteers continually dedicate their time to protecting communities across the state and this couldn't happen without supportive employers."

The Supportive Employer Program was launched in March 2013 to recognise the essential contribution employers make to the volunteering effort. Since then, 248 businesses have been presented with a Certificate of Appreciation and 72 have received a Supportive Employers Award.

2018 NSW RFS Supportive Employer Special Commendation recipients: Allam Homes • Canon Australia • Citadel Technology Solutions • Collier & Miller • Elders – Walgett • Lawson Car Care & Tyre Centre • Mars Petcare Australia • Overall Photography Mid North Coast • Peabody Wipihjong Coal Mine • Roads & Maritime Services • Russell Vale Laboratory • Sliced Tech • Tatham Poultry.



**Geronimo Farm Equipment –**

**invite you to inspect the**

**NEW HOLLAND T9 SMART – TRAC TRACTOR**

**AND**  
**THE CROPLANDS ROGATOR C SERIES SELF**

**PROPELLED SPRAYER**

at the following Information Evenings:

Tuesday 24 July 2018 at The Denyer's, Sefon Park,  
Cryon Rd, Walgett from 3pm to 7.30pm

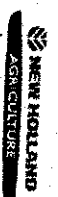
Wednesday 25 July 2018 at the Coonamble Golf Course from  
3pm to 7.30pm

RSVP for both events by Wednesday 18 July 2018 to Kylie 68281500  
or Lex 0417488197

Light refreshments and nibbles supplied

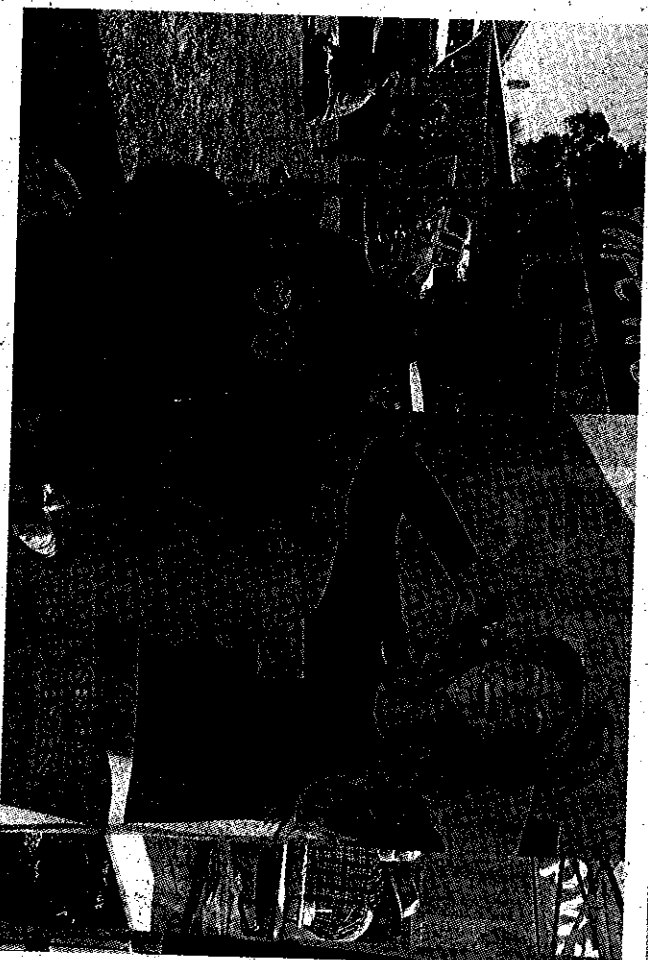
**TOPICS COVERED:**

- WEEDIt\* demonstration
  - Croplands Rogator demonstration
  - Dye night – look at driftable fines
  - 24 hour spray chart
  - Nozzle selection
  - Fallow and winter sprays
  - Adjuvant decisions: Collide\* and Activator\*
- \*All trademarks are owned by Nisfarm Australia Ltd  
or used under license



**CROPLANDS**

**NAIDOC WEEK 2018**



# NAIDOC WEEK PICTORIAL

